
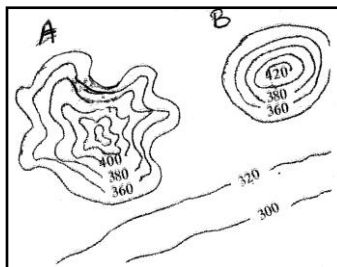


**Index No.** .....

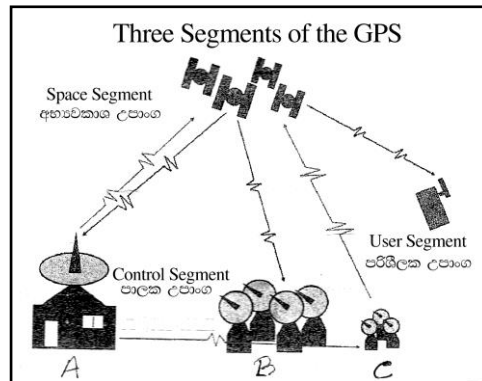
## Two Hours

- ## Part - I

- Out of the standard colours and symbols used in a 1: 50 000 topographic map of Sri Lanka, the features, causeway and ferry belong to
  - drainage
  - tourist information
  - relief
  - roads
  - Irrigation
- The length of a dam of a tank located in a topographic map of 1: 25 000 scale is 16cm. Its real length is
  - 4 cm
  - 3.5 km
  - 4 km
  - 8 km
  - 32 km
- A and B relief features shown in the figure are
  - isolated mountain, residual hill
  - conical hill, isolated mountain
  - isolated hill, conical hill
  - mineral hill, isolated mountain
  - conical hill, asymmetrical hill
- 
 symbol in a topographic map represents,
  - main road
  - Express way
  - main road on the dam
  - jeep road
  - road under construction
- An instrument that used to make printed map in the past is
  - computer
  - Digitizing tablet
  - scanner
  - compass
  - satelliteization



6. Which answer shows the areas where coastal features, low land relief features, highland relief features depicted on 1: 50 000 metric sheet of Sri Lanka are found respectively.
- Aluthgama, Rakwana, Dambulla
  - Jaffna, Kuliyaipitiya, Rathnapura
  - Mathugama, Kekirawa, Galle
  - Batticaloa, Kekirawa, Dambulla
  - Kalkuda, Katharagama, Mahiyanganaya
- (.....)
7. Vector data model and Raster data model in Geographical Information System are depended on,
- line
  - point
  - polygon
  - zone
  - coordinate
- (.....)
8. Select the answer that shows centres respectively denoted by the letters A, B, C in the figure which consist basic components of Global Positioning System (GPS)



- Master control centre, monitoring stations, Antenna stations
  - holding station, Antenna station, receiving station
  - Master control centre, controlling centre, Antenna stations
  - user centre, space station, control segment
  - Master control centre, monitoring stations, space centre
- (.....)
9. What has become a multifunctional tool that can present geographic information in a very useful and efficient way?
- topographic map
  - digital map
  - thematic map
  - isopleth map
  - dot map
- (.....)
10. The thematic map that have prepared for representing export and import direction in a certain country is
- compound bar graph
  - colour map
  - dot map
  - linear map
  - flow map
- (.....)
11. The Conrad discontinuity zone can be seen in
- the land zone
  - continental shelf zone
  - upper mantle zone
  - inner core zone
  - ocean zone
- (.....)
12. A collection of animals or plants that belong to the same species that live in a specific area for a specific period of time is known,
- as a species
  - as a living community
  - as the population
  - as the ecosystem
  - as the biome
- (.....)

13. The rock zones of Sri Lanka and the abundant rocks in those regions are given below. What is the answer if they are matched correctly?

Rock zone	Rock type
01. Jurassic	A-limestone rock
02. Vanni complex	B-gneiss rock
03. Miocene limestone belt	C- kandelite rock
04. Highland series	D- Migmatite rock

- i. A B C D      ii. D C A B      iii. B D A C      iv. D A B C      v. D B A C      (.....)

14. The country that is famous for gems except Brazil in the world is,

- i. Sri Lanka      ii. India      iii. Australia  
iv. South Africa      v. Canada      (.....)

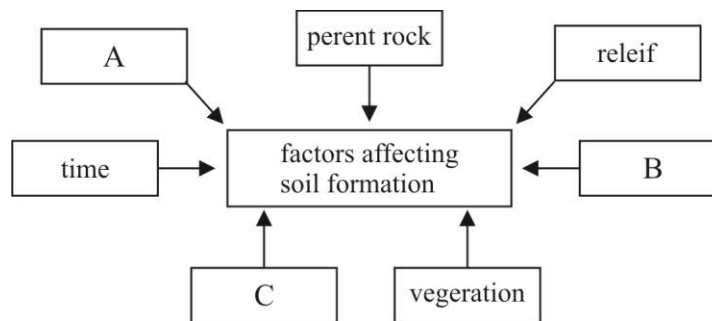
15. Select the answer that shows a process of river erosion and a river transportation respectively

- i. abrasion solution      ii. Corrasion, traction  
iii. plucking, corrasion      iv. abrasion, traction  
v. hydraulic action, solution      (.....)

16. Select the correct answer for the volcanic zone that stretches from Alaska to south America and from New Zealand to the north through the Japanese Islands to Alaska

- i. African rift valley zone      ii. Mid Atlantic ridge  
iii. zone around Mediterranean zone      iv. Himalaya zone  
v. Peri pacific zone      (.....)

17.



Select the answer that shows factors as A, B, c in the above figure which represent factors affecting soil formation ,

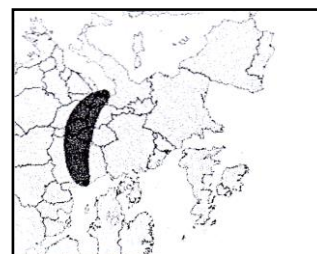
- i. Sun light, pebbles, process of wind  
ii. Human activities, climate, soil organism  
iii. Vegetation, climate, agro-chemicals  
iv. drainage, organic fertilizer, time  
v. chemical fertilizer, irrigation, human activities      (.....)

18. Minerals that consist of physical features such as hardness, weight is known as,

- i. energy minerals      ii. non metallic minerals  
iii. non-ferrous      iv. metallic minerals  
v. siliceous minerals      (.....)

19. The answer that contains only landforms formed by epeirogenic movement (vertical earth movement) is  
 i. Shield, earth basin, ocean basin  
 ii. fold mountain, fault, continental shelf  
 iii. plateau, fault, continental shelf  
 iv. overfold, recumbent fold, monocline fold  
 v. host, rift valley, shield (.....)
20. Which is formed by the sedimentary spread on the ocean floor adjacent to the continental slope  
 i. mid oceanic ridge ii. flood plain  
 iii. abyssal plain iv. continental boundary  
 v. continental shelf (.....)
21. Select the answer when rivers are matched with their origin correctly  
 1. from a spring A. Volga  
 2. from a area with heavy rain fall B. rivers in dry zone in Sri Lanka  
 3. melting snow or glaciers C. Nile river  
 4. lake D. rivers in wet zone of Sri Lanka  
 i. D C A B ii. D B A C  
 iii. D B C A iv. A B D C  
 v. B D A C (.....)
22. When the load eroded by the swash of an ocean wave is transported in the coastal region perpendicularly and parallelly to the beach are accurately shown  
 i. longshore drift, backwash ii. swash, backwash  
 iii. high tide, low tide iv. backwash, longshore drift  
 v. subcurrent, traction (.....)
23. What is currently believed to be the cause of widespread smog in atmosphere in Colombo, Gampaha, Badulla, Kaluthara, Mannar areas of Sri Lanka.  
 i. heavy industrialization in Colombo metropolitan area.  
 ii. input damage in agriculture in arid regions  
 iii. heavy traffic  
 iv. destroying forest  
 v. gas spread due to the industrialization in neighboring India (.....)
24. Select the answer that shows the weather phenomenon that has the strongest impact on human activities such as aviation, traffic and war.  
 i. temperature ii. visibility iii. rainfall  
 iv. humidity v. pressure (.....)
25. What is the phenomenon in which a large portion of the visible light from the sun reflects off the earth and is sent upwards?  
 i. transpiration ii. overuse iii. cloud formation  
 iv. precipitation v. Albedo (.....)
26. World population become stable after  
 i. 1970 AD ii. 1974 AD  
 iii. 2011 AD iv. 1987 AD  
 v. 1927 AD (.....)

27. Choose the answer that correctly includes the number of births and deaths per minute according to the Word population data in 2015  
 i. 278, 10                      ii. 109, 23                      iii. 278, 109                      iv. 278, 169                      v. 169, 109                      (.....)
28. According to the projected data chart, the top 10 most populous countries in the world by 2050 that belong to the continent of Africa are,  
 i. Ethiopia, Democratic Republic of the Congo, Nigeria  
 ii. Nigeria, Democratic Republic of the Congo, Ethiopia  
 iii. Nigeria, Egypt, Mali  
 iv. Ethiopia, Gabon , Angola  
 v. Nigeria, Ethiopia, South Africa                      (.....)
29. The choice that includes a demographic phenomenon  
 i. disability                      ii. poverty                      iii. aging  
 iv. food security                      v. gender                      (.....)
30. According to the population Census, what is the answer of a couple of Asian countries, respectively, among the developing countries with the highest crude birth rate  
 i. Pakistan, Sri Lanka                      ii. Bangladesh, China                      iii. China, India  
 iv. Pakistan, Bangladesh                      v. India, Nepal                      (.....)
31. What is the province inhabited by 28% of the total population of Sri Lanka  
 i. North central province                      ii. Western province                      iii. Northern province  
 iv. North western province                      v. Southern province                      (.....)
32. One of the reasons for decrease in Sri Lanka's poverty coefficient or Gini coefficient to 0.48% in 2012 is  
 i. controlling population                      ii. government employment  
 iii. distributing income equally                      iv. improving the health  
 v. implementing various project for low-income families                      (.....)
33. The diagram shows the location of a polar ocean platform across the borders of countries in Europe. Select the answer that is named correctly.  
 i. From Chicago via Pittsburg  
 ii. The Blue Banana zone stretches from Manchester to northern Italy.  
 iii. The Golden Banana region from the Mediterranean coast to Malaysia.  
 iv. The Golden Banana region from Poland in central Europe to Austria.  
 v. Urban zone stretches from China to Pittsburg                      (.....)
34. The following are some of the most common environmental problems associated with urbanization in the world. What is the answer that includes areas where they are most commonly identified.  
 A- A country with high air pollution  
 B- The city is in trouble for not disposing urban waste properly.  
 i. Kulna city, Raj city in Bangladesh  
 ii. Manila city in Philippines, Kulna city  
 iii. Tianguis city in China, Rajhashi in Bangladesh  
 iv. Manila city in China, New Delhi in India  
 v. Kampala in India, Rajhashi in Philippine.                      (.....)



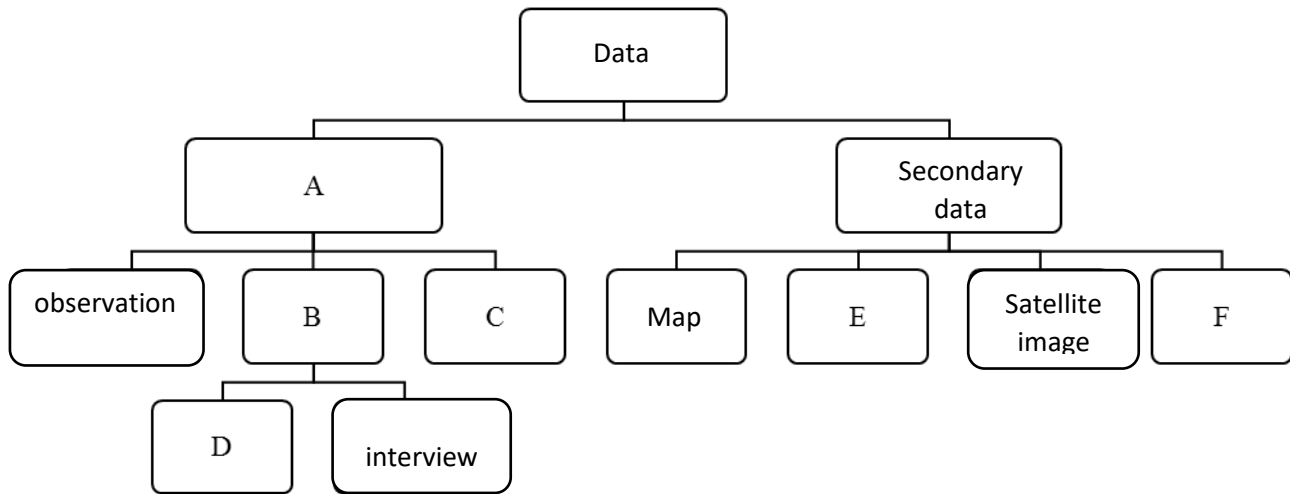
35. The adverse environmental impact caused by the use of chemicals in Agriculture is,  
 i. growth of pests harmful to crops  
 ii. management fungal control  
 iii. algae growth in reservoirs  
 iv. weed control which is detrimental to cultivation  
 v. relative decline in yield (.....)
36. The world Bank and the Urban Development Authority have identified the real level of urbanization in Sri Lanka as assumed is  
 i. 48 %            ii 74.4 %            iii. 45 %            iv. 18.2 %            v. 66 % (.....)
37. What is the strongest physical factor influencing the concentration of Sri Lankan settlement in coastal areas?  
 i. Kingdoms migrating Southwest.  
 ii. Implementing development projects.  
 iii. Urbanization and industrialization.  
 iv. The development of river valley civilization.  
 v. The arrival of western nations. (.....)
38. The term 'Bos-Wash' to introduce the city from Boston to Washington in the United states was presented by,  
 i. Carl Ritter  
 ii. Dickinson  
 iii. Jhon Gottman  
 iv. Patrick Geddes  
 v. Robert Bresick (.....)
39. Select the answer that shows two extraction industries.  
 i. iron and steel, cement  
 ii. lime, coal  
 iii. petro-chemical, cement  
 iv. Coal, Petroleum  
 v. Petroleum, iron and steel (.....)
40. A mineral extracted from surface excavation is  
 i. iron ore  
 ii. coal  
 iii. granite  
 iv. petroleum  
 v. graphite (.....)



### Part III

- 03) i. Explain the difference between data and information.

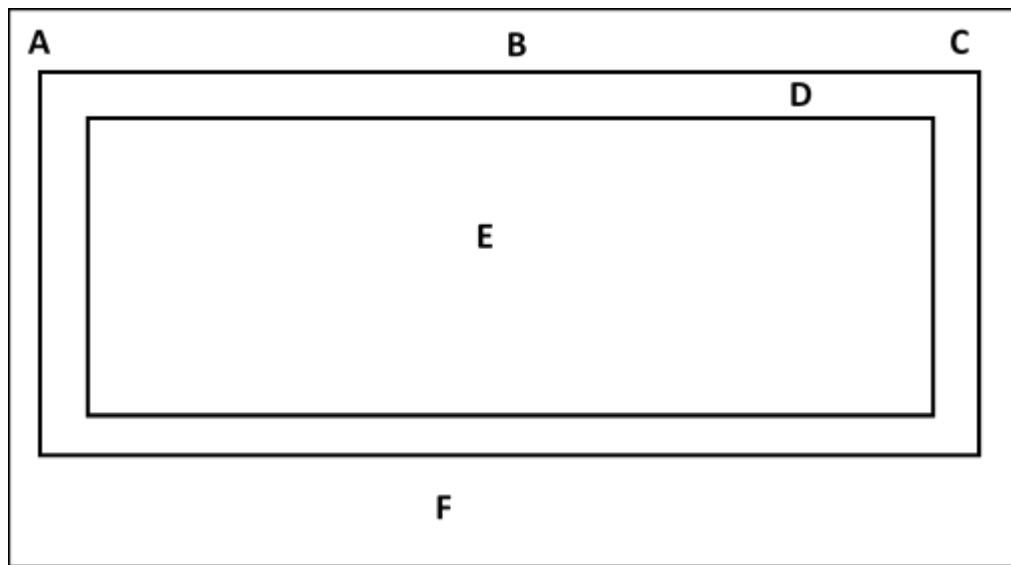
(m . 2)



(surveys / continuous data / internet / questionnaire / inquiries / primary data / aerial photograph / measurement)

- iii. Briefly describe two challenges faced by a researcher in collecting primary data. (m . 4)  
iv. Briefly explain the two advantages and a disadvantage of using secondary data. (m . 6)

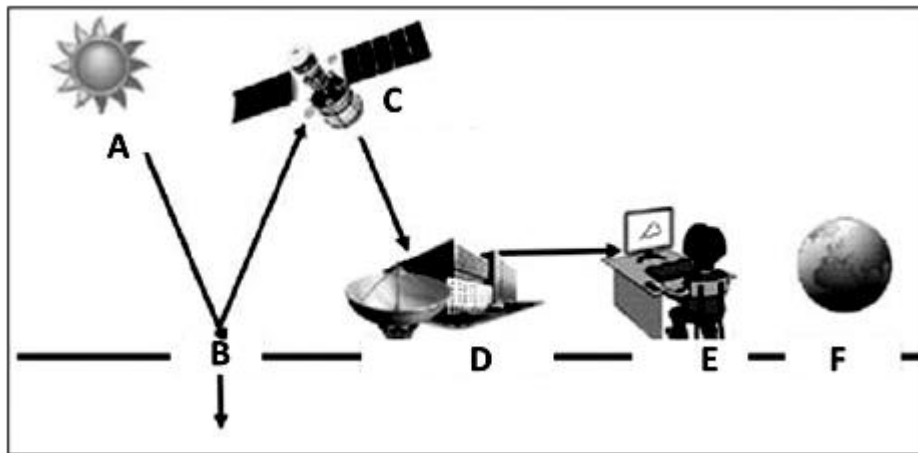
- 04) i. What is a topographic map? (m . 3)  
ii. A model of a topographic map of 1:50000 scale is given below. Answer the following question based on that. (m . 5)



- a) What is indicated by letter B  
b) Name the area indicated by the letter D and write two information mentioned there.  
c) Name two information mentioned in the area indicated by the letter F



- iii. Briefly explain the two benefits of using a topographic map (m . 4)
  - iv. Explain two similar features that can be identified when using a topographic map and a digital map (m . 5)
- 05)
- i. Name the new methods that contribute to digital mapping, a multifunctional tool that can present geographical information efficiently. (m . 3)
  - ii. Write four common features of the new cartographic methods. (m . 4)
  - iii. Briefly describe two problems with using digital maps rather than using topographic maps. (m . 5)
  - iv. Briefly explain two reasons why the current use of maps is spreading rapidly around the world. (m . 3)
- 06)
- i. Briefly explain the remote sensing process. (m . 2)
  - ii. The processes that take place in Remote Sensing is given in the following diagram. Name A-F processes. (m . 4)



- iii. Briefly explain with the help of diagram above how information needed for Remote Sensing is get by satellite technology. (m . 4)
- iv. Briefly describe the workings of two field that use remote sensing. (m . 5)



## Provincial Department of Education - NWP

### First Term Test - Grade 13 - 2020

Index No. ....

Geography II

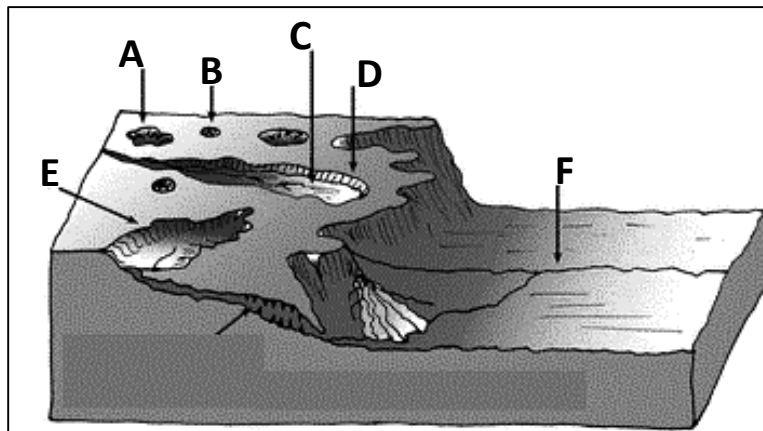
Three Hours

- This paper consists of two parts
- Answer five questions selecting at least two questions from each part

### Part I

### Physical Geography

- 01) i. Explain what a system is. (4 marks)
- ii. Name three type of systems that can be classified according to the nature of function and energy transfer and provide examples for each. (4 marks)
- iii. Explain with three factors how ecosystems in Sri Lanka have been threatened. (6 marks)
- iv. Explain the three measures taken by the Government to protect the endangered and degraded ecosystem of Sri Lanka (6 marks)
- 02) i. Briefly describe two ways in which limestone is formed (4marks)
- ii. Name the four limestone (Karst) region in the world. (4 marks)
- iii. Describe the formation process of three karst landforms shown in the following figure. (6 marks)



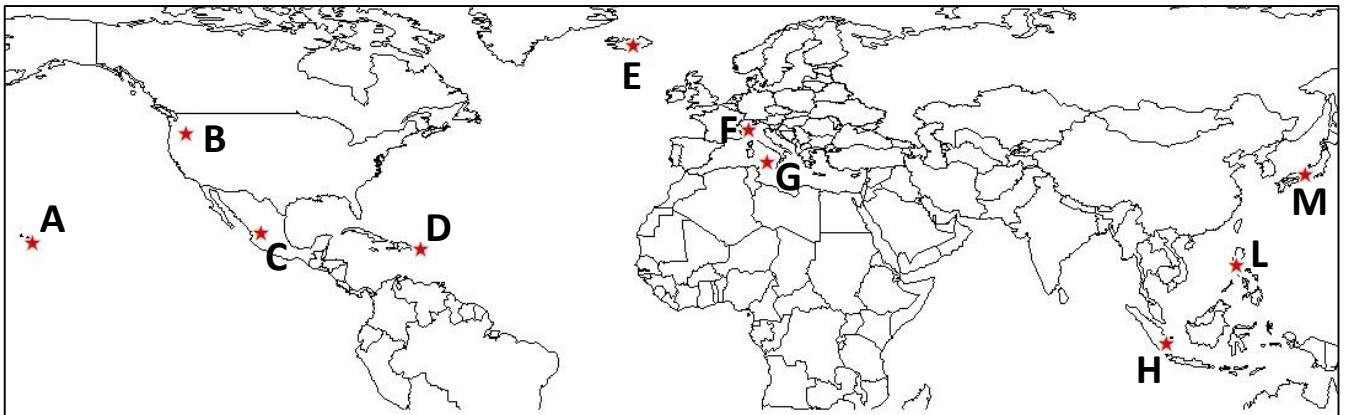
- iv. Explain with examples 3 factors that contribute to groundwater pollution in Sri Lanka. (6 marks)

- 03) i. Name three main factors that influenced the climate in Sri Lanka (3marks)
- ii. Describe three short term effect of rainfall. (6 marks)
- iii. a) Name sub- types of Tropical climate (A) according to Koppen's climatic classification (3 marks)
- b) Name the type of climate found in Sri Lanka and make an introduction about it. (2 marks)
- iv. Describe with examples how rainfall pattern in Sri Lanka affect for people's life (6 marks)

- 04) i. Briefly explain the activism of volcanism (3 marks)
- ii. Distribution of following volcanoes are shown in the map. Rewrite them with the correct letters.

Fujiyama	St. Helena	Mona loa	Etna
Mayon	Vesuvius	Crakatoa	Hecla

(4 marks)



- iii. Describe with diagram formation process of three intrusive volcanic landforms (6 marks)
- iv. Describe with two facts the economical value of land area associated with volcanoes.(4 marks)

## Part II

### Human Geography

05). How international migrants are divided into developed and developing regions 1990 – 2017

Year	Total number of international migrants (million)	In developed countries		In developing countries	
		No.of migrants(million)	As a percentage	No of migrants(million)	As a percentage
1990	152.5	82.4	54.0	70.1	46.0
1995	160.7	92.3	57.4	68.4	42.6
2000	172.6	103.4	59.9	69.2	40.1
2025	190.5	116.3	61.0	74.2	39.0
2010	220.0	130.7	59.4	89.3	40.6
2015	247.6	140.3	56.7	107.3	43.3
2017	257.7	146.0	56.7	111.7	43.3

Source:- (2017) N.K.Dangalla, Human geography study

- i. Write four special features of the countries with the highest number of migrants in the years 2000 – 2017 according to the international migration pattern (4 marks)
  - ii. Name the four major Asian countries that provide migrants in the Asian region, which is the main geographical region that provides international migration (4 marks)
  - iii. Explain briefly 3 factors influencing international migration. (6 marks)
  - iv. Discuss the uniqueness of three positive impacts on destination countries. (6 marks)
- 06) i. What is urbanization. (3 marks)
- ii. Name five fields that extend from the center of urbanization to the surrounding areas. (5 marks)
- iii. Describe how the expansion of two field you mentioned above takes place. (6 marks)
- iv. Discuss three problems associated with urbanization. (6 marks)
- 07) i. Name three areas where evidence of Prehistoric settlements existed in Sri Lanka. (3 marks)
- ii. a) Name three type of rural settlements found in Sri Lanka.  
b) Describe with examples the features of one of settlements mentioned above. (5 marks)
- iii. Briefly describe three criteria that can distinguish a rural settlement from an urban settlement. (6 marks)
- iv. Describe the features of rural settlements in Sri Lanka. (6 marks)
- 08) i. Name four sectors of focused under Agricultural Technology. (3 marks)
- ii. Describe how agricultural technology developed under Green Revolution (5 marks)
- iii. Explain the agricultural monopoly which is a major problem that has arisen due to the use of modern agronomic methods. (6 marks)
- iv. Describe with examples three techniques used in eco - friendly organic agriculture. (8 marks)

WWW.LOL.LK

# BUY

## PAST PAPERS

### 071 777 4440

Buy Online - [www.LOL.lk](http://www.LOL.lk)

• GCE O/L • PAST PAPERS  
• GCE A/L • SHORT NOTES



Protect Yourself From Coronavirus

**YOU STAY AT HOME**



**WE DELIVER!**

**ORDER NOW**

**075 699 9990**

**WWW.LOL.LK**



## TOP CATEGORIES

GCE O/L Exam NEW

Grade 09, 10 & 11

Grade 06, 07 & 08

Grade 04 & 05

Grade 01, 02 & 03

About Us

Shop HOT

Cart

HUGE SALE – SHOP NOW

අ.පො.ස. කාපෙළ ජයගැනීමේ විජේවීර් වෙනස

අ.පො.ස. කාපෙළ සමනල දැනුම

**A+ GUIDE PAST PAPERS**

පසුගිය විභාග ප්‍රශ්නෝත්තර

2010 සිට 2019 දක්වා

විද්‍යාව

ඉතිහාසය

සිංහල භාෂාව හා සාහිත්‍යය

ව්‍යාපාර හා ගිණුම්කරණ අධ්‍යයනය

භූගෝල විද්‍යාව

ඉංග්‍රීසි භාෂාව

සියලුම විෂයයන් සඳහා පසුගිය විභාග ප්‍රශ්න පත්‍ර Online Order කරන්න.

ප්‍රශ්න උත්තර වර්ගීකරණය අනුමාන



### ISLANDWIDE DELIVERY

Free delivery on all orders over Rs. 3500



### More than 1000+ Papers

For all major Subjects and mediums



### ONLINE SUPPORT 24/7

Shopping Hotline 071 777 4440

## FEATURED PRODUCTS

### SORT BY

☐ GCE O/L Exam



GCE O/L EXAM, SCIENCE

O/L Science Past Paper Book

★★★★★

රු 350.00

– 1 + ADD TO CART



GCE O/L EXAM, MUSIC

O/L Music Past Paper Book

★★★★★

රු 350.00

– 1 + ADD TO CART



GCE O/L EXAM, MATHEMATICS

O/L Mathematics Past Paper Book

★★★★★

රු 350.00

– 1 + ADD TO CART



GCE O/L EXAM, INFORMATION & COMMUNICATION TECHNOLOGY

O/L Information & Communication Technology Past Paper Book

★★★★★

රු 350.00



GCE O/L EXAM, HISTORY

O/L History Past Paper Book

★★★★★

රු 350.00



GCE O/L EXAM, HEALTH & PHYSICAL EDUCATION

O/L Health & Physical Education Past Paper Book

★★★★★

රු 350.00